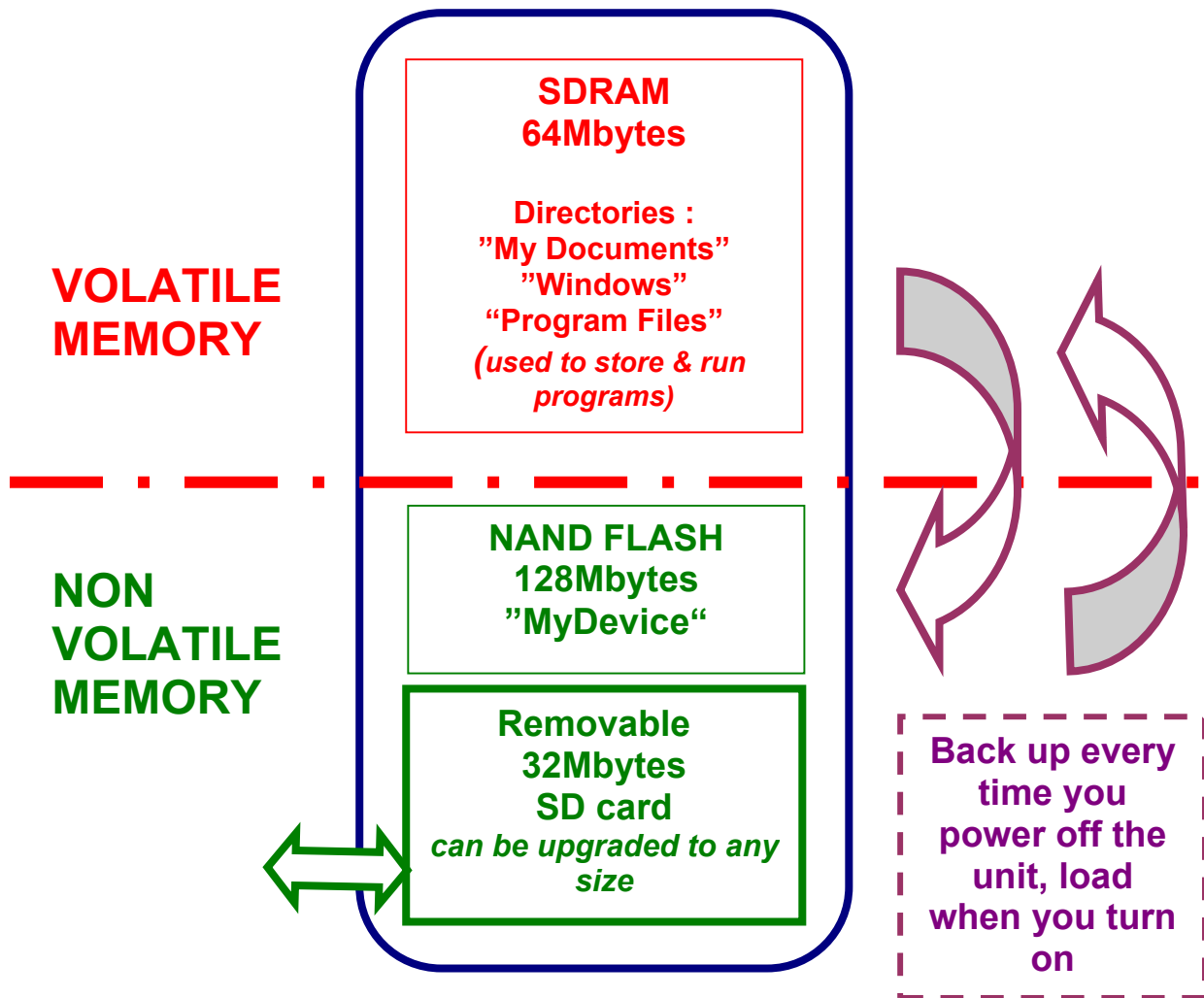


MMCE MEMORY MANAGEMENT



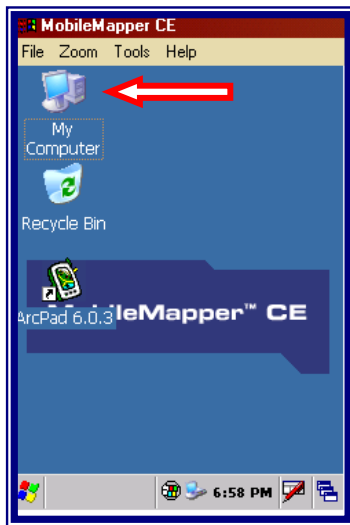
1 - To save time we recommend that you install programs on "MyDevice" and store your data on SD card .

2 – After installing ArcPad, move to MyDevice or to the SD card the sample files (these files are placed in "My Documents" by default).

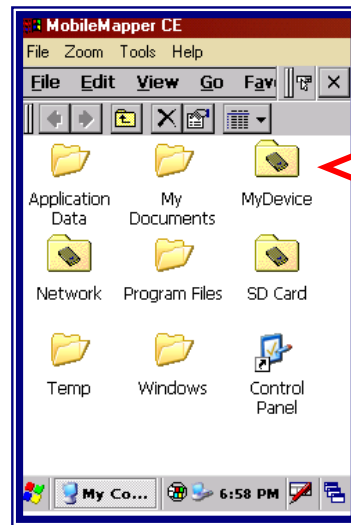
3 – Remove from the unit the special SD card containing the ArcPad installation program.

4 – After installing ArcPad from your PC (in Program Files volatile memory), re-install it onto MyDevice ignoring the "ArcPad already exists" message.

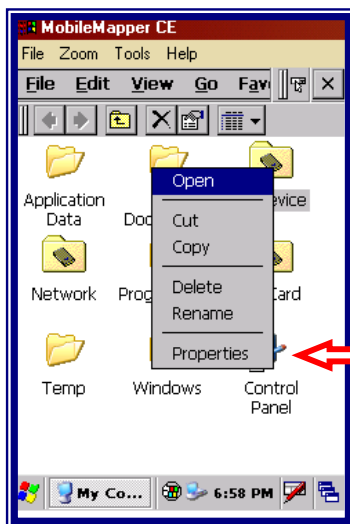
Checking Memory Properties



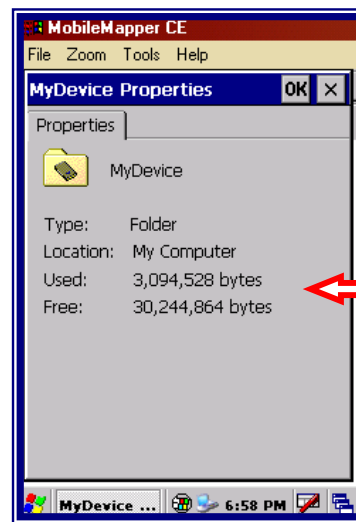
1
Double tap
the My
Computer
icon



2
Tap & hold
the My
Device icon

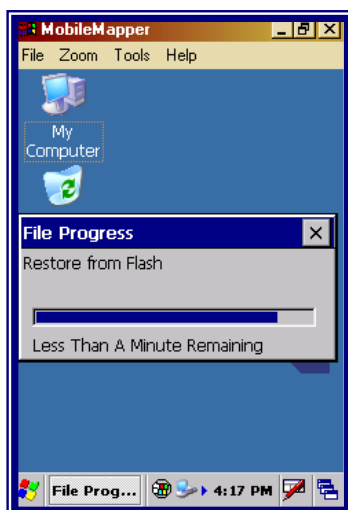


3
Tap the
Properties
icon



4
Read the
memory
properties

Time to transfer data

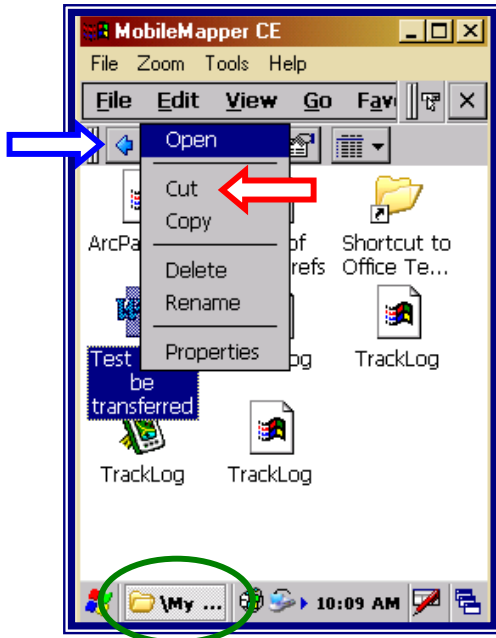


When starting up the equipment, the time to restore from flash is proportional to the quantity of data stored in the “My Documents” directory.

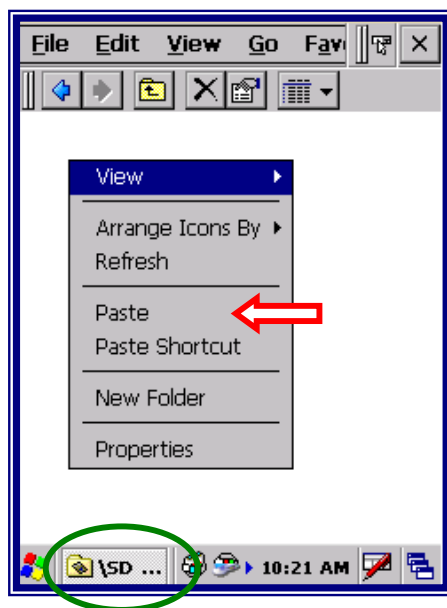
Each extra 1 MegaByte add very approximately 3 seconds.

File transfer from one memory to another one

i.e. from My Documents to SD card



- 1 . Double tap the My Computer icon, then the My Documents one.
- 2 . Tap & hold the file icon.
- 3 . **Select Cut.**
- 4 . **Go to previous screen.**



- 5 . Double tap the SD Card icon .
- 6 . Tap & hold on a blank part of the screen.
- 7 . **Select Paste**

RAM adjustment

Only if necessary, you can adjust RAM .

Tap the WINDOWS icon, then Settings, Control Panel

Double tap the System icon ...

Choose the Memory index ...

Adjust the sharing between Storage & Program memory.

